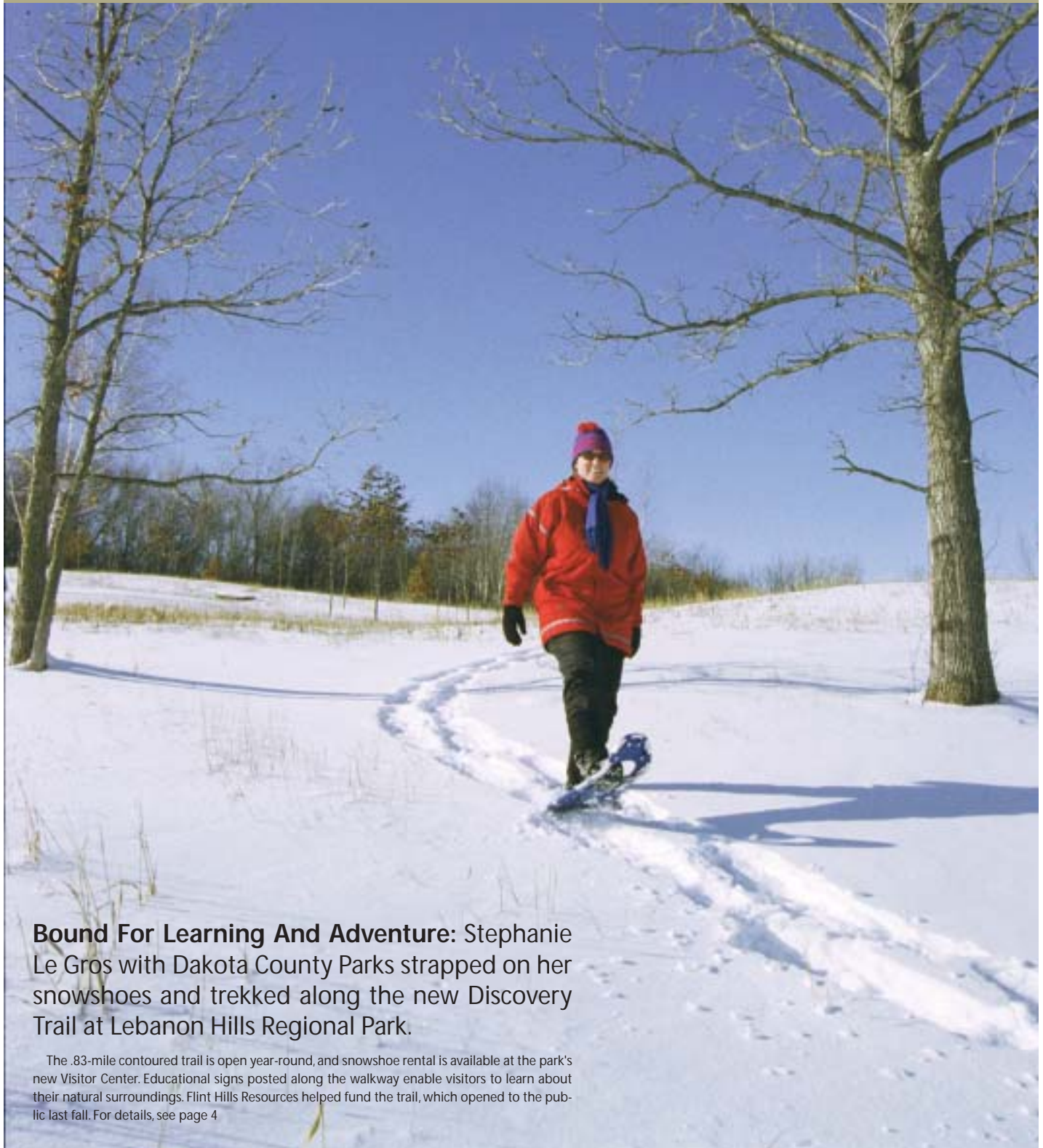


CommunityMatters

for friends and neighbors of the Pine Bend Refinery



Winter 2004 • Volume 6, Number 1



Bound For Learning And Adventure: Stephanie Le Gros with Dakota County Parks strapped on her snowshoes and trekked along the new Discovery Trail at Lebanon Hills Regional Park.

The .83-mile contoured trail is open year-round, and snowshoe rental is available at the park's new Visitor Center. Educational signs posted along the walkway enable visitors to learn about their natural surroundings. Flint Hills Resources helped fund the trail, which opened to the public last fall. For details, see page 4

Cleaner Diesel Fuel Project

In 2003, much of our time was spent preparing for and performing the maintenance work we did in September. As 2004 begins, we turn our attention to the next big project.

Starting in 2006, the U. S. Environmental Protection Agency (EPA) is requiring cleaner diesel fuel and stricter diesel engine emission standards. The goal of these new regulations is to significantly reduce air emissions from heavy-duty trucks. It will take several years to completely turn over the fleet of diesel engines and fully realize the air quality benefits. The EPA estimates that cleaner diesel fuel and engines will be the equivalent of eliminating air emissions from 13 million of today's trucks.

To comply with the diesel fuel component of the new regulations, Flint Hills will build two new processing units and three storage tanks at our Pine Bend refinery. A top priority is to ensure a minimal impact on refinery air emissions and groundwater levels.

At the end of this year, the refinery is scheduled to meet its target of reducing emissions by 50 percent in 5 years. In designing the new processing units, we plan to use the same type of emission control equipment we have installed in recent years as part of our emission reduction effort. The new processing units will cause some air emission increases when they begin operation; however, the company is working to minimize those increases through offsetting emission reduction projects elsewhere in the refinery.



Jeff Wilkes

Preliminary plans also include drilling a new well in the refinery, which would potentially increase groundwater use. We have completed groundwater modeling to better understand the impact a new well would have on neighboring wells. The modeling indicates that a new well would have a minimal impact on local groundwater levels. We are contacting nearby neighbors to let them know about the project and will work with them to mitigate any impacts to their well if necessary.

Flint Hills is also looking at water reuse options from sources inside and outside the refinery that could possibly offset the amount of groundwater needed for the project. Some of these possibilities include reusing process

water from within the refinery, using wastewater from Empire Township or putting a new well closer to the Mississippi River.

Flint Hills is working to obtain the necessary state and local permits for the project. Construction needs to begin in 2004 and the units will begin operating in 2006. We will keep you posted on our progress.

Jeff Wilkes,
Refinery Manager and
Vice President of Minnesota Operations

COMPANY NEWS

Flint Hills' Next Frontier: Alaska

Pursuing opportunities for company growth, Flint Hills Resources reached an agreement last fall with The Williams Companies to purchase its refining and terminal business in Alaska. The purchase is part of Flint Hills' effort to pursue growth opportunities and build on its refining and marketing expertise in the petroleum industry. Flint Hills' customer, Holiday Stationstores, also reached an agreement with Williams to purchase 26 gasoline convenience stores in Alaska.

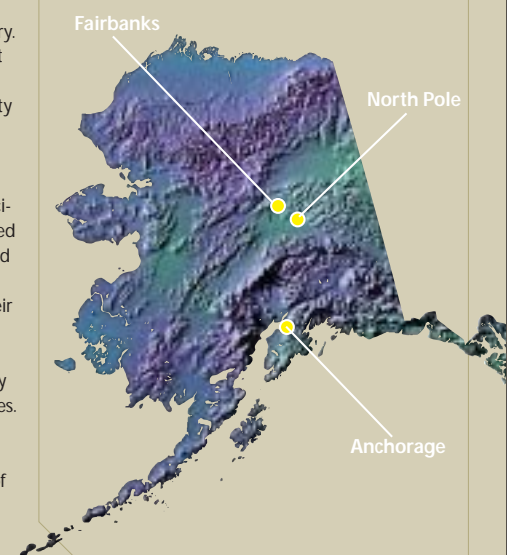
"Flint Hills is excited about becoming a part of the Alaska community and its energy sector," said Dave Robertson, president of Flint Hills Resources. "We look forward to bringing cleaner-burning fuels to Alaskan consumers."

The North Pole refinery, near Fairbanks, has a daily processing capacity of 220,000 barrels of crude oil. The purchase also includes two refined products terminals in Fairbanks and Anchorage, as well as crude oil and refined products inventories.

Flint Hills Resources and Holiday Stationstores will be extending their existing relationship in the Upper Midwest market to Alaska. In 1999, Flint Hills and Holiday introduced Blue Planet® gasoline in the Twin Cities market. Blue Planet, which reduces tailpipe emissions, is the only low sulfur gasoline in the Twin Cities available in all three octane grades.

Koch Alaska Pipeline Company, a sister company to Flint Hills, also agreed to buy William's interest in the Trans Alaska Pipeline which transports Alaskan crude oil. The sale must be approved by the state of Alaska and various federal agencies. It is expected to be finalized in the first quarter of 2004.

Area Map of Alaska



Community News

Stockings Filled with Cheer

How much cheer can a little red stocking hold? Enough to help 30,000 Minnesota children and families, thanks to funds donated during the Children's Home Society & Family Services (CHSFS) 2003 Little Red Stocking campaign.

The 94th annual effort raised more than \$550,000 to support CHSFS year round programs, which range from senior services and emergency child care to adoption programs and advocacy efforts. Part of the money was used to give hundreds of holiday stockings – stuffed from toe to top – to children in need.

"We're starting the New Year on the right foot with another successful Little Red Stocking program," said Donna W. King, president and CEO, CHSFS. "There is nothing more fulfilling or rewarding than knowing you have brought joy to a child in need – especially during the holiday season. We thank everyone who contributed this year."

Individuals could make direct contributions to CHSFS or purchase a \$1 paper stocking at Applebee's restaurants over the holidays. For the sixth year, Flint Hills Resources underwrote all campaign costs to ensure 100 percent of the donated gifts would directly support family and children's programs. WCCO-TV was the campaign's media sponsor. Refinery employees Nita McMullen and Darcy Freiermuth helped raise an additional \$2,000 for CHSFS by hosting a T-shirt fundraiser during September's turnaround.



Donation Helps Further Lake Wilson Recovery Efforts

Members of Flint Hills Resources/Rosemount Explorer Post 635 recently donated fire equipment to the town of Lake Wilson, Minnesota, following a damaging explosion last January. The blast destroyed two adjoining fire halls and caused extensive damage to the small community's downtown businesses and nearby homes.

Lake Wilson Fire Department lost most of its equipment, but thanks to volunteer efforts led by Pine Bend employee Harry Wickhorst, some important items have been replaced. Wickhorst participates as a group leader in the Explorer Post 635, which is made up of area high school students interested in firefighting. Jake Rylander, also involved with the Explorers, donated many hours to help coordinate all of the donation details.

Many other individuals and local companies have pitched in to help. Ed Nelson, from Nelson's Emergency Apparatus Repair, tuned-up a 1969 Mack pumper fire truck the Explorers used for



training. Greg Norris, VEIT Companies, arranged transportation to move the pumper truck. And, Robert Johnson, Johnson Welding in Coates, provided a trailer to deliver a 1982 Suburban (donated by Wickhorst) to Lake Wilson.

Stock-up and Share

Employees may want to pick up a few extra nonperishable food items next time they're at the grocery store to donate during Pine Bend's "March Madness" food drive. March is Minnesota's Food Share Month, and again this year employees and contractors can donate food through the end of the month. All donated food will be distributed to local individuals and families in need by the Community Action Council offices in Rosemount and Hastings.

Community Notes

We are truly grateful for your support of our recreation, education and conservation programs that strengthen the bond between people and the living earth. We are delighted to count Flint Hills Resources among our closest partners, and thank you for your long-standing, significant support.

With gratitude,
Lee Ehmke
Minnesota Zoo

Many thanks for your contribution for the 2003 Regina Classic Silent Auction. The silent auction is an exciting part of our golf tournament and continues to be successful due to the generosity and support of businesses such as yours. We are delighted to have raised an overall net profit of approximately \$40,000...the money will be used to purchase new beds and transfer equipment for our residents, allowing them to move with greater independence and ease.

Sincerely,
Maria Reis, Regina Foundation
Regina Medical Center

On behalf of the board and staff of the American Red Cross, thank you for your donation to the 4th Annual Lifeguard Olympics...Your gift serves as an example of how organizations and businesses can become partners with the American Red Cross of the St. Paul area as it provides services to our community and helps people prevent, prepare for and cope with emergencies. Again, thank you for helping us to help others.

Best regards,
Heather Kulla
American Red Cross of the St. Paul Area

We would like to thank you for your support of public education. Your generous gift of transportation and admission fees to the Minnesota Science Museum allowed our children to participate in a learning experience our school would not otherwise have been able to afford...I wish you could have been on the buses with us on our way home to hear the many positive and excited comments made by our children and our volunteer parents. Again thank you for your generosity; we cannot adequately express our gratitude!

Sincerely,
Mrs. Pasch, Ms. Richards, Mrs. Schroeder, Ms. Zak, teachers
John F. Kennedy Elementary School, Hastings

We learned a lot at the Science Museum thanks to you!! We loved learning about Lewis and Clark's expedition in the Omnitheater...In other parts of the museum, we learned that about 1,000 water drops come out of our mouths when we sneeze (no wonder it's so important to cover our mouth when we sneeze!). We learned that Native Americans heated glass in fire and made colored beads...Our schools are so fortunate to have your support! You are making a difference in children's lives.

We loved our day at the Science Museum.
Mrs. Matula's fourth grade class
Hastings



Students from Dakota County elementary schools continue to enjoy class outings to the Science Museum of Minnesota funded by Flint Hills.





“Discovery Trail is really a conduit to connect people to Lebanon Hills Regional Park,” explained Steve Sullivan, Director, Dakota County Parks Department.

“It fits perfectly with our mission to provide recreational and educational opportunities to the public. By learning about their surroundings, visitors develop a sense of stewardship for their environment.”

Whether you're interested in learning more about Minnesota's natural habitat – or simply want to enjoy a hike through the forest – point

your compass towards Lebanon Hills Regional Park. A new .83-mile Discovery Trail welcomes walkers of all abilities year-round and features interpretive signs that change with the seasons.

Dakota County Parks celebrated the grand opening of Lebanon Hills Visitor Center and the Discovery Trail last October. More than 1,000 friends and neighbors participated in the festivities and trekked the trail loop. As part of its annual Community Partner giving program, Flint Hills Resources provided funding to Dakota County Parks in 2002 to support the trail's planning and development.

Descriptive, self-guided signs along the path feature interesting facts and details about the park's diverse surroundings. For example, some people may not know that the Ironwood is the state's toughest tree. Or, that sightings of Trillium and Wild Columbine are signs of springtime in Minnesota forests.

“We developed this trail to really help people see things they might otherwise overlook,” said Stephanie Le Gros, outdoor education supervisor, Dakota County Parks. “The signage helps visitors understand how diverse their surroundings are, and hopefully they finish their



Stephanie Le Gros and Steve Sullivan from Dakota County Parks share information about the new Discovery Trail and its educational and recreational offering.

Dakota County Board Chair Nancy Schouweiler enjoyed the sights and sounds along the Discovery Trail on its opening day.

Discovery Trail Opens

For Hiking, Snowshoeing



Dozens of hikers blazed the self-guided, .83-mile trail loop - and discovered plenty of interesting natural findings - located at Lebanon Hills Regional Park.

hike with a better appreciation for our natural environment.”

Discovery Trail is the first interpretive trail in Dakota County. According to Le Gros, it was developed as a contour trail, which means it follows the natural contour of the landscape. Contour trails minimize maintenance and help prevent erosion while offering a dependable treadway.



The Buckthorn Stops Here

Volunteer Work Continues Along Pine Bend Bluffs

Nearly 75 volunteers spent a day at Pine Bend Bluffs last fall removing one of the metro area's most invasive plant species. Buckthorn is notorious for choking out growth of native plants. The dense, woody shrub had taken over a rare oak savanna located on a 7.5 acre parcel of land owned by Flint Hills Resources.

"We'll never permanently remove buckthorn, but the good news is the majority of it is gone and the native grasses now have a competitive edge," said Tom Lewanski, conservation director at Friends of the Mississippi River. "More sunlight can reach the ground and help promote growth within the natural area."

Next Steps

With the bulk of the buckthorn out of the way, Lewanski and his team will conduct controlled burns to revitalize the native plant species this spring. Plants benefit from burns because fire helps spark growth in the plant tissue that exists below ground.



Employees Paul Wright (pictured directly above) and Doug Manley (pictured top) tossed buckthorn branches that were cleared from Pine Bend Bluffs last fall.



John Bowman, refinery employee and bluffs volunteer, worked to remove buckthorn from an oak savanna which is being restored to its pre-settler state. Below, a Boy Scout Troop from Roseville also pitched in to battle the buckthorn, which helped members earn their Environmental Science badge.

Crews will be clearing non-oak trees within the savanna. By reducing the overhead canopy of leaves, more sunlight can reach the ground, which in turn helps promote growth of native plants. Felled trees will be used for firewood or sent to District Energy St. Paul and used to fuel the city's efficient district heating and cooling system. And, volunteers can lend a hand by planting native grass seeds and tree seedlings next fall.

According to Lewanski, volunteers have played an important role in transforming Flint Hills' bluff land. "Pine Bend Refinery employees and community members have really gotten behind Flint Hills to support their work along the Bluffs. Last October's volunteer day was an opportunity for volunteers who pitched in when things got started in May 2000 to return to the bluff land and see the wonderful transformation first hand."

The Greater Effort

Great River Greening, Friends of the Mississippi River, the Minnesota Department of Natural Resources and Flint Hills Resources teamed up five years ago with plans to restore the Pine Bend Bluffs area to its pre-settler state. The hope is that some day the bluffs will look like it did more than a hundred years ago. Pine Bend Bluffs rises above the Mississippi River corridor and includes seldom seen ecosystems such as sand gravel prairie, oak forest, white pines, wild-flower fields and black ash swamp. It is a critical flyway for migrating songbirds and water fowl that use the natural habitat as a layover on their migration routes.



Great Strides

Flint Hills Resources employees – from top-ranking racers to cheering volunteers – took in the fun during the 22nd annual Twin Cities Marathon last October.

Six refinery employees laced up their running shoes to compete in the marathon's Corporate Challenge event. Each member of the Blue Planet team crossed the finish line, and they secured an impressive sixth-place spot in overall standings with a total time of 18 hours, 50 minutes and 56 seconds. Running on behalf of Flint Hills were: Kirk Walztoni (2:53:12); Wesley Turybury (3:17:35); Anne Walztoni (3:33:32); Mark Stoffel (3:51:10); Lars Nygren (5:05:11) and Walt Giesbrecht (5:25:28).

"We had another great year," said Anne Walztoni, who serves as the company's recruiter for the Corporate Challenge competition. "We'll keep doing the marathon.

It's a lot of fun to compete as a team in a sporting event that is most often perceived as being an individual sport." Walztoni noted two team highlights: Kirk Walztoni and Wes Turybury both recorded their best times; and first-timer Walt Giesbrecht finished without a glitch.

Flint Hills employees also participated by staffing the company-sponsored water stop at mile 9 as well as the Blue Planet booth located at the "Mile 27" finish line festivities.

Interested runners can register for the 23rd Annual Twin Cities Marathon in May. Visit www.twincitiesmarathon.org, or call 763.287.3888, for details.



Congratulations to Kirk Walztoni (left) who ran his best marathon time in the 22nd Twin Cities Marathon last October.

Anne Walztoni (pictured in the Blue Planet shirt) organized the refinery's Blue Planet Corporate Challenge team of employees.



IN GOOD COMPANY

Fall Colors

Below are a few favorite photographs taken during Flint Hills Resources events last fall – a volunteer outing along the Pine Bend Bluffs Natural Area and the grand opening celebration of the Lebanon Hills Regional Park Visitor Center and Discovery Trail. The company also is proud of our recertification from the Wildlife Habitat Council, which employee Joel Mielke accepted on behalf of many committed Pine Bend employees last November.

A. Barry Schade, director of Dakota County's Environmental Management Department, and his son are pictured with Deb McGovern, Flint Hills Resources.

B. Steve Sullivan, parks director, Dakota County (left), Rosemount Mayor Bill Droste and Jonathan Wilmhurst, board chair, Great River Greening, with his daughter.

C. Tim Lombard (right), Pine Bend employee, presents a check on behalf of Flint Hills Resources during the annual Minnesota Ducks Unlimited Banquet.

D. From left, Dakota County Commissioners Nancy Schouweiler, Will Branning, Patrice Bataglia and Kathleen Gaylord are pictured with Eagan Mayor Pat Geagan and Rosemount Mayor Bill Droste pictured outside the Lebanon Hills' Visitor Center.

E. Dave Cathcart, Great River Greening, and Tom Lewanski, Friends of the Mississippi River.

F. Joel Mielke (right), Flint Hills Resources employee and Pine Bend Bluffs volunteer, poses with Steve Albert, Wildlife Habitat Council Board Chair, at an award ceremony last November.



Zoo's Tropics Trail Hosts Warmer Weather and Wild Fun



Zoo visitors left their snow boots at the door, and wiggled their toes in the sand during the Minnesota Zoo's 6th annual Tropical Beach Party over Presidents' weekend, February 14-16.

Fourteen tons of sand filled a 16 x 35-foot sandbox at the entrance of the popular Tropics Trail. Festivities included festive calypso music, coral reef feedings and face painting. In addition, zookeepers helped visitors learn about the interesting

animals that live in tropical areas of Asia, Indonesia, Africa, the Philippines, Indo-Burma and South America.

Presented by Flint Hills Resources, the event was part of the company's support of the Tropical Trail. The zoo is working on expansion efforts along the trail – slated for completion May 2004 – which will highlight animals and plants from many tropical regions of the world, said Andrea Bork, Minnesota Zoo development director.

"Revitalization efforts focus on biodiversity hotspots," explained Bork. "A hotspot is important area because it usually houses a high concentration of endemic species, or species that cannot be found anywhere else. Through expanded educational programs, interactive exhibits and new interpretive signage we hope to help visitors better understand and appreciate animals and plants that call the Tropics home."

According to Bork, 25 global hotspots represent 1.4 percent of the earth's land surface. Yet, these locations



A variety of animals from tropical regions of the world, including this blue macaw, call the Minnesota Zoo's Tropics Trail home. Flint Hills Resources sponsors the Zoo's popular trail which is expanding with the addition of new animals and interactive exhibits.

support 60 percent of the known species of birds, mammals, reptiles and amphibians. Because of the high concentration of species, the tropical regions are fragile ecosystems.

A new Madagascar Hotspot Exhibit will feature both Ring-tailed and Ruffed Lemurs – new residents at the zoo. A second area of improvement will extend from the Komodo Monitor exhibit to the Coral Reef and all species in between.

CHILDREN'S FESTIVAL

Raising the Curtain On Family Fun

Children's Festival: June 1-6

The Flint Hills International Children's Festival will feature many favorite activities again this spring, such as Rice Park's free World Party featuring the amazing butterfly tent, fun kids' crafts and international foods.

But, spectacular headliner acts will add even more excitement to the six-day event as actors, musicians and performers from around the globe visit Saint Paul to perform on Ordway Center stages. International artists – from Australia and New Zealand to China and Vietnam – are world renowned for their ability to engage young audiences.

The New Shanghai Circus from China is expected to make a memorable – and magical – impact on audiences. Children can watch plate spinners, contortionists, acrobats and imperial dancers in the one-hour

program. Another likely favorite will be Very Eric Carle by Nova Scotia's Mermaid Theatre which draws upon the whimsical tales from the popular children's book writer and illustrator, Eric Carle. And The Boy and the Bamboo Flute, performed by the Vietnamese Patch Theatre Company, uses mime, dance, martial arts, song and storytelling to tell this touching story of strength.

An estimated 30,000 people will attend the festival. Thousands of school children arriving in school busses will participate during the first four days of the event. Festival Family Days – the final two days on June 5 and 6 – are open to the public. Visit www.ordway.org – or call 651.224.4222 – for ticket information, an event schedule and performance details.



◀ The Flint Hills International Children's Festival will feature many international cultures with an array of unique traditions and wonders.



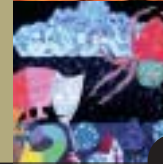
◀ Enjoy the The New Shanghai Circus from China which includes plate spinners, contortionists, acrobats and imperial dancers among other performers.



◀ Don't Miss the Daredevil Opera Company's *Cirrus Inferno!*



◀ Catch a scene from *The Boy and the Bamboo Flute*, performed by the Vietnamese Patch Theatre Company



◀ *Very Eric Carle*, by Nova Scotia's Mermaid Theatre, draws upon the whimsical tales from the popular children's book writer and illustrator, Eric Carle.

One Pass for Two Family Favorites

As part of the fourth annual Flint Hills International Children's Festival, the Science Museum of Minnesota and Ordway Center for the Performing Arts created an Arts & Science Family Pass. Both popular attractions teamed up on the deal that enables families to save more than 50 percent per person on tickets to fun.

The \$25 per-person pass is valid during Family Festival Days on June 5 and 6 and includes:

- One ticket to the Ordway Main Hall Children's Festival presentation of the New Shanghai Circus;
- Two other Festival performances of your choice, such as Mermaid Theatre's *Very Eric Carle*, Daredevil Opera Company's *Cirrus Inferno*, Patch Theatre Company's *The Boy and the Bamboo Flute* and *World Music – WAI*;
- Access to all exhibits at the Science Museum of Minnesota; and
- One ticket to the Omnitheater at the Science Museum.

Visit www.ordway.org and/or www.smm.org for details on all exhibits and event information.

Fraser's Music Therapy is Key to Successful Learning

Fraser ended 2003 on an upbeat, positive note when the family service organization's music therapy program expanded to serve an additional 100 children at Fraser Child & Family Center in Minneapolis.

Music therapists use instruments and song to help children develop skills by inspiring them to work toward their academic, physical, social, emotional or communications goals. This can range from saying new words to holding an instrument. In the past, music therapy was offered at Fraser's Richfield location, but with funding from Flint Hills Resources the program also is offered at the University Avenue facility. The company has been a corporate supporter of Fraser's efforts since 1998.



presented the award in appreciation for support and advocacy at the industry's fifth annual national conference in Minneapolis last November.

Fraser's Gift to Children

Music therapy is the foundation of Fraser's learning philosophy and continues to be an integral part of its educational and rehabilitation programs. Today, more than 300 children of various abilities, from 6-months to 6-years old, benefit from Fraser's music therapy services.

Louise Whitbeck Fraser pioneered the practice of using music in the 1930s to teach children with developmental disabilities. She devoted her life to helping children with special needs, including her own daughter who had a hearing impairment. Fraser believed music was a "universal language" that could provide the basis for learning, and she developed innovative teaching methods that resulted in remarkable student achievements.

All Fraser therapists are certified by the Board for Music Therapy. In addition, Fraser offers a nationally renowned internship

program which brings students from across the country to Fraser to learn therapy methods through a program accredited by the American Music Therapy Association.

Details on Music Therapy

Music therapy is an established health profession similar to physical or occupational therapy. The teaching method is a tool to help children with special needs develop their physical, psychological, cognitive and/or social skills. Music therapy has been effective in treating a broad range of individuals – from autistic children to elderly patients with Alzheimer's disease.



Children at Fraser's Child and Family Center demonstrate how fun learning is during a recent music therapy session.



CommunityMatters

for friends and neighbors of the Flint Hills Refinery

Winter 2004 Vol. 6 No. 1

Published by Flint Hills Resources for the friends and neighbors of the Pine Bend Refinery. For more information about us check our website at www.fhr.com.

Your comments and suggestions are always welcome. Please call 651.437.0584 or write to Public Affairs, Flint Hills Resources, P.O. Box 64596, St. Paul, MN 55164-0596.

Managing Editor: **John Hofland**
 Editorial Assistant: **Fran Shepardson**
 Editor/Writer: **Kim Harbinson**
 Design Services: **David Hahn**
Koch Creative

Printed with recycled paper containing at least 10 percent post consumer waste.

PERMIT NO 7732
 ST. PAUL, MN
 US POSTAGE PAID
 STANDARD
 RESORTED